

Atrial fibrillation

Summary

What is atrial fibrillation (AF)?

AF is one of a number of disorders commonly referred to as 'arrhythmias', in which the heart does not beat with a normal rhythm. AF is caused by a disturbance of the heart's own electrical system. The problem starts in the upper chambers of the heart (the atria), and causes these chambers to quiver (or 'fibrillate'), rather than beat normally. This can mean that the heart is not pumping as efficiently as it should be.

Who does AF affect?

AF is one of the most common types of arrhythmia, occurring in about 2% of the general population. It is particularly common in older people, affecting 5% of people over the age of 65.

Why is it important to recognise and treat AF?

AF can cause symptoms such as a 'fluttering' heart beat, an irregular pulse, weakness and dizziness. In addition, AF increases a person's risk of problems caused by blood clots that can form within the atria when they aren't beating properly. Once a blood clot has formed, all or part of it may then break away and travel through the blood stream until it blocks a small artery, potentially cutting off the blood supply to one of the important organs of the body. If this happens in one of the blood vessels supplying the brain, it can cause a stroke.

Treatment for AF

The best course of treatment for a person with AF will depend on:

- the severity of symptoms
- the cause (if known)
- the duration of the problem
- that person's risk of stroke and other problems caused by blood clots blocking the flow of blood to vital organs of the body
- the risks associated with each treatment option for that person.

Available treatments include medicines or procedures to return the heart rhythm to normal (cardioversion) and long-term medicines to maintain normal heart rhythm, slow the heart rate and/or thin the blood. In rare cases, surgical procedures may also be used to try to normalise the heart rhythm.

Further information and support

For further information or advice, contact our national telephone information service, Heart Health Information Service, on 1300 36 27 87 (local call cost). Alternatively, visit our website at www.heartfoundation.org.au. Our Heart Health Information Service can also provide information on relevant support groups throughout Australia.

What is AF?

AF is a common and important disturbance of the electrical system of the heart. It is one of a number of disorders commonly referred to as 'arrhythmias' or 'dysrhythmias', in which the heart does not beat with a normal rhythm.

If not recognised and correctly treated, AF can result in significant problems, including stroke and heart failure.

The normal heart rhythm

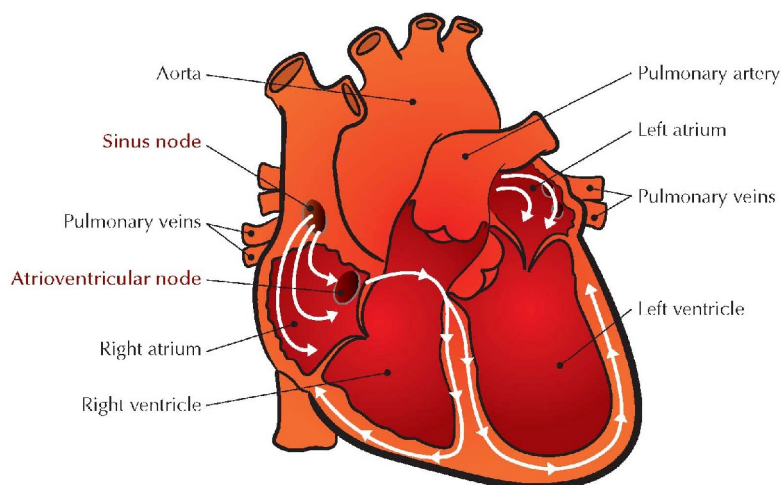
The heart is a highly efficient pump with four chambers (see diagram below). The two chambers on the right side of the heart receive oxygen-poor ('blue') blood from the body and pump this blood to the lungs, where it receives oxygen. The oxygen-rich ('red') blood returns to the left side of the heart, and the two left chambers pump this oxygenated blood to the rest of the body. The lower (major) pumping chambers, called the 'ventricles', receive blood from the top chambers, the atria, and do the hard work of pumping the blood to the other parts of the body.

In a normal heart, the atria contract (squeeze) first, pushing blood into the ventricles. The ventricles then contract; the right ventricle pumping the blood out to the lungs and the left ventricle pumping blood to the rest of the body. This process repeats at a regular rate, usually around 60 to 100 times every minute.

Normally, the contraction of the atria is set off by tiny electrical signals that come from the heart's natural 'pacemaker' – a small area of the heart called the sinus node that is located in the top of the right atrium. These signals travel rapidly throughout the atria to ensure that all the muscle fibres contract at the same time, pushing blood into the ventricles.

These same electrical signals are passed on to the ventricles via the atrioventricular (AV) node and cause the ventricles to contract a short time later, after they have been filled with blood from the atria. This normal heart rhythm is known as 'sinus rhythm', because it is controlled by the sinus node.

Normal electrical control of the heart beat



What happens in AF?

AF occurs when there are abnormal electrical impulses in the upper chambers of the heart (the atria). In AF, 'waves' of uncontrolled electrical signals travel through the atria, rather than the normal, highly regulated signals from the sinus node. These 'waves' often start in one or more of the four veins that bring blood from the lungs into the heart (the pulmonary veins). These signals cause the muscle fibres in the atria to contract out of time with each other, and the atria 'quiver' (or, in medical terms, 'fibrillate'). Some of this abnormal electrical activity is passed on to the ventricles, causing a rapid and irregular heartbeat. When the heart is in AF, it is not pumping regularly and therefore, not working as efficiently as it should be.

What are the symptoms of AF?

People with AF may experience palpitations – that is, become aware of their heartbeat and may actually feel irregular 'fluttering' of the heart. This fluttering is caused by the abnormal electrical signals in the atria reaching the ventricles and causing them to beat too rapidly and in an irregular pattern. Some people may notice that they have an irregular pulse. AF may also cause general feelings of fatigue, weakness, exercise intolerance, discomfort or dizziness, because the heart is not pumping efficiently. Occasionally this may result in fainting or collapse.

Some people with AF may not notice any symptoms, however, it is still important to treat the condition, because it can lead to other problems.

Who does AF affect?

AF is one of the most common types of arrhythmia, occurring in about 2% of the general population. It is particularly common in older people, affecting 5% of people over the age of 65.

What causes AF?

The most common causes of AF are long-term high blood pressure, coronary heart disease (reduced blood flow to the heart caused by clogging of the arteries) or valvular heart disease (problems with the valves of the heart that normally keep blood flowing in the right direction). Another less common but treatable cause is hyperthyroidism (an overactive thyroid gland).

AF can also be associated with chest trauma and/or surgery, caffeine intake and excessive consumption of alcohol. Certain types of medicine, as well as other diseases, such as pneumonia, can 'trigger' AF, but sometimes there is no apparent cause – it just happens. Some people experience AF as a 'one-off' episode; in others, it may come and go ('paroxysmal' AF) or persist ('permanent' or 'chronic' AF).

Why is it important to recognise and treat AF?

AF can cause a number of symptoms, as described above, and may indicate that the affected person has underlying heart or blood vessel disease.

One of the most important problems associated with AF is that it may lead to the development of a blood clot inside the atria. This can occur when the atria are not beating properly. In this situation the blood does not flow normally through the heart, allowing blood to collect or 'pool' and leading to an increased risk of a clot forming. A portion or portions of this clot ('embolus' or 'emboli') can then break off and be carried from the heart through the bloodstream into smaller and smaller blood vessels until they get stuck, potentially blocking the blood supply to important organs. If the blockage occurs in a blood vessel supplying the brain, it can cause a stroke. Without treatment, the risk of stroke among people aged over 65 years with AF is about one in 20 per year, which is five to six times higher than those of similar age. The risk may be even higher if the AF is associated with damaged or diseased heart valves, or if the person has a history of high blood pressure, diabetes, heart failure or stroke.

If AF is suspected, a number of tests including an electrocardiogram (ECG) and echocardiography (ultrasound of the heart) are usually done to confirm the diagnosis and look for any underlying cause (e.g. diseased heart valves) before treatment options are considered.

Is AF 'curable'?

Quite often, an episode of AF will resolve on its own; the heart will return to a normal rhythm without treatment. In other cases, a normal heart rhythm may be restored through cardioversion procedures (see page 5). However, in either case, AF may recur, despite the use of medicines to maintain sinus rhythm. If this happens often, or for prolonged periods, patients are at increased risk of blood clots forming in the atria and causing problems. For this reason, when frequent episodes of AF persist, ongoing blood thinning (anticoagulant) medicine is generally prescribed to reduce the chance of blood clotting in the heart and the risk of emboli developing. In addition, medicine is typically used to slow the heart rate in people whose hearts are beating too fast (and causing unpleasant symptoms of irregular rapid palpitations or weakness).

What treatments are available?

The best course of treatment for an individual with AF will depend on a number of factors, including:

- the severity of symptoms
- the cause (if known) and duration of AF
- the person's overall risk of stroke and other problems caused by emboli
- the risks of a particular therapy for that person.

Most people with AF will need to take medicine (usually aspirin or warfarin) to prevent blood clots from forming. In addition, treatments may be needed to prevent the heart from beating too fast or to restore and maintain a normal heart rhythm.

In some people, such as those with infrequent AF, long-term medicine may be all that is required to treat AF. In people in whom AF persists, cardioversion techniques may be used to restore a normal heart rhythm. If these approaches can't be used or are unsuccessful, ablation procedures may be considered. These methods are outlined on page 5.

Cardioversion – restoring normal rhythm

For people with a prolonged or particularly serious episode of AF, 'cardioversion' may be used to return the heart to a normal rhythm. After cardioversion, long-term medicines are often prescribed to prevent AF recurring (see section on long-term medicines below).

Electrical cardioversion

In this procedure, an electrical 'shock' is given to the heart (while the person is anaesthetised) to help restore a normal rhythm and thus reduce the long-term risks associated with AF. Electrical cardioversion is very safe; the only major risk is the possibility that the procedure could dislodge a blood clot that may have already formed in one of the atria. This risk is small, and reduced further by checking for existing blood clots with a test called a 'trans-oesophageal' echocardiogram (which takes ultrasound images of the heart from inside the oesophagus) and by giving the person blood-thinning medicines before and after the procedure.

Pharmacological cardioversion

Some medicines (such as flecainide, sotalol and amiodarone) can be used to revert the abnormal electrical rhythm of the heart to normal. This is known as 'pharmacological cardioversion'. These medicines may be given as tablets or as an injection, and may also need to be taken regularly in the longer term to maintain sinus rhythm.

Long-term medicines

For most people with AF, a combination of ongoing medicines will be recommended to help to maintain a normal heart rhythm, slow the rate at which the heart beats and/or reduce the risk of stroke and other problems caused by emboli. This is true even for many people who undergo cardioversion or ablation procedures. Some of the most common medicines used for these purposes are outlined below.

Slowing the heart rate and maintaining normal rhythm

Some medicines, such as digoxin, beta-blockers and some (but not all) calcium channel blockers, help to slow the heart rate by increasing the time taken for the ventricles to fill with blood before they contract and pump the blood to other parts of the body. Others (including sotalol, flecainide and amiodarone) are known as 'antiarrhythmic agents', and work by normalising and maintaining the electrical rhythm of the heart.

Thinning the blood

Most people with AF will be prescribed medicine to 'thin' the blood to prevent clotting. This will decrease the risk of stroke or other problems caused by emboli. The most common medicines used for this purpose are warfarin and aspirin. Warfarin is significantly more effective than aspirin in reducing the risk of stroke. However, warfarin also carries a greater risk of side effects, especially excessive bleeding. Some people with AF may be prescribed aspirin and warfarin. The decision to prescribe one or both of these medicines will be based on a balance between reducing the risk of blood clots and emboli forming and the likelihood of excessive bleeding in an individual patient, which can be assessed by the person's doctor.

People taking warfarin need to be careful that they take the dose they are prescribed at the same time each day, and regular blood tests are done to make sure the dose is correct. This means that the recommended dose may change. The frequency of blood tests will be high initially until the dose is stabilised; but even after this, blood tests will need to continue at

regular intervals (usually monthly) indefinitely to ensure that the dosage is effective without unduly increasing the risk of side effects.

There are several things, such as eating patterns and use of other medicines, that can affect the way warfarin works, and these need to be considered and controlled (see section on lifestyle management below). People taking warfarin should report any unusual bleeding or bruising to their doctor.

Ablation procedures

'Ablation' refers to removing or 'inactivating' small areas of tissue in the body – in the case of AF, the area(s) of the heart responsible for creating or passing on the abnormal electrical signals in the atria. These procedures are not done often and generally only in people whose AF recurs despite cardioversion and ongoing medicine, or in those for whom medicine options are unsuitable.

Catheter ablation

In catheter ablation procedures, a long, thin tube (or 'catheter') is inserted into a blood vessel in the leg and threaded through the vessel until the tip reaches the heart. At the tip of the catheter is an electrode, which can emit radiofrequency waves to 'burn' and inactivate the target area(s).

Surgical ablation

Surgical treatment of AF is very rarely necessary, and usually only done when other heart surgery is also needed. One technique occasionally used to treat AF is known as the 'maze operation'. In this procedure, a number of cuts are made in the atria of the heart, often around the pulmonary vein, to isolate abnormal electrical currents, stopping them from travelling throughout the atria and causing abnormal beating patterns.

An artificial pacemaker will sometimes be implanted at the same time to take over the electrical control of the heart.

Lifestyle management

In most people, AF can be well controlled, and they continue to lead a relatively normal and healthy lifestyle. However, as AF is often associated with other forms of cardiovascular disease, consideration should be given to common risk factors for cardiovascular disease.

Avoiding smoking, enjoying healthy eating, being physically active, controlling blood pressure and achieving and maintaining a healthy body weight are important ways to minimise the risk of cardiovascular disease. People with diabetes should make sure that their diabetes is well controlled.

Healthy eating

Enjoying healthy eating is important for everybody's heart health. However, people with AF may need to pay particular attention to their eating patterns, especially those taking warfarin (see boxed information on warfarin on page 7).

Physical activity

People with heart disease get the same benefits from regular moderate physical activity as other people do. However, it is recommended that people with AF talk to their doctor or other health professional about the level of activity that is right for them. People taking warfarin may be advised to avoid particularly physical or competitive sports where there is a significant chance of injury, due to the risk of excessive bleeding.

Warfarin

People taking warfarin need to be aware that certain types of foods can either enhance or inhibit the effects of the drug. Foods high in vitamin K, such as leafy green vegetables, can reduce the effect of warfarin; some dietary supplements may increase the effects of warfarin.

It is important to remember that these foods should not be avoided altogether, but people taking warfarin should try to keep their intake of these foods fairly consistent.

Foods to be aware of include:

- leafy green vegetables (such as spinach, broccoli, lettuce, cabbage, asparagus, parsley, watercress, brussels sprouts)
- canola, olive and soybean oils
- seaweed (such as in sushi)
- green and herbal teas
- liver
- spring onions.

People taking warfarin should talk to a doctor first if they are considering changes to their eating habits (for example, switching to a vegetarian diet, following a special meal plan to lose or gain weight, or starting or discontinuing any dietary supplements, such as fish oil supplements).

Alcohol consumption should be limited, as it too can alter the effectiveness of warfarin.

For more information, contact the NPS Medicines Line on 1300 888 763.

When should medical attention be sought?

A person with AF should see a doctor if palpitations, dizziness or other symptoms persist. Symptoms of heart attack or stroke should be treated as an emergency, and an ambulance

* Symptoms of a heart attack include tightness, fullness, pressure, squeezing, heaviness or pain in your chest, neck, jaw, throat, shoulders, back, arms and even your wrists and hands. This pain or discomfort may start in your chest and spread to these other areas of your body. Or you may not get chest pain at all but just feel pain or discomfort in one or more of these other areas. You may also have difficulty in breathing, break out in a cold sweat, experience nausea or vomiting, and/or feel dizzy or light-headed.

** Symptoms of stroke may include one or a combination of the following: weakness, numbness or paralysis of the face, arm or leg on either or both sides of the body; difficulty speaking or understanding; dizziness, loss of balance or an unexplained fall; loss of vision, sudden blurred or decreased vision in one or both eyes; headache, usually severe and of abrupt onset, or unexplained change in the pattern of headaches; and/or difficulty swallowing.



called by dialing triple zero (000). People taking warfarin should also look out for any signs of abnormal bleeding.

Further information and support

Cardiac rehabilitation programs provide patients and their families with education, information, physical activity and support. The Heart Foundation and the World Health Organization recommend that all patients with heart disease attend an appropriate cardiac rehabilitation and prevention program.

For general information, please contact our Heart Health Information Service on 1300 36 27 87 (local call cost), email heartline@heartfoundation.org.au or visit www.heartfoundation.org.au. Our Heart Health Information Service can also give you information on relevant support groups throughout Australia.

Acknowledgements

We would like to thank Clinical Professor Graeme Hankey of the Stroke Unit at Royal Perth Hospital and the School of Medicine and Pharmacology at the University of Western Australia for his assistance in preparing this information.

© 2004–2008 National Heart Foundation of Australia
INF-004-C

Terms of use: This material has been developed for general information and educational purposes only. It does not constitute medical advice. Please consult your health care provider if you have, or suspect you have, a health problem. The information contained in this material has been independently researched and developed by the National Heart Foundation of Australia and is based on the available scientific evidence at the time of writing. It is not an endorsement of any organisation, product or service. While care has been taken in preparing the content of this material, the National Heart Foundation of Australia and its employees cannot accept any liability, including for any loss or damage, resulting from the reliance on the content, or for its accuracy, currency and completeness. This material may be found in third parties' programs or materials (including but not limited to show bags or advertising kits). This does not imply an endorsement or recommendation by the National Heart Foundation of Australia for such third parties' organisations, products or services, including these parties' materials or information. Any use of National Heart Foundation of Australia material by another person or organisation is done so at the user's own risk.