

## Connect with us

Freecall 1800 454 363

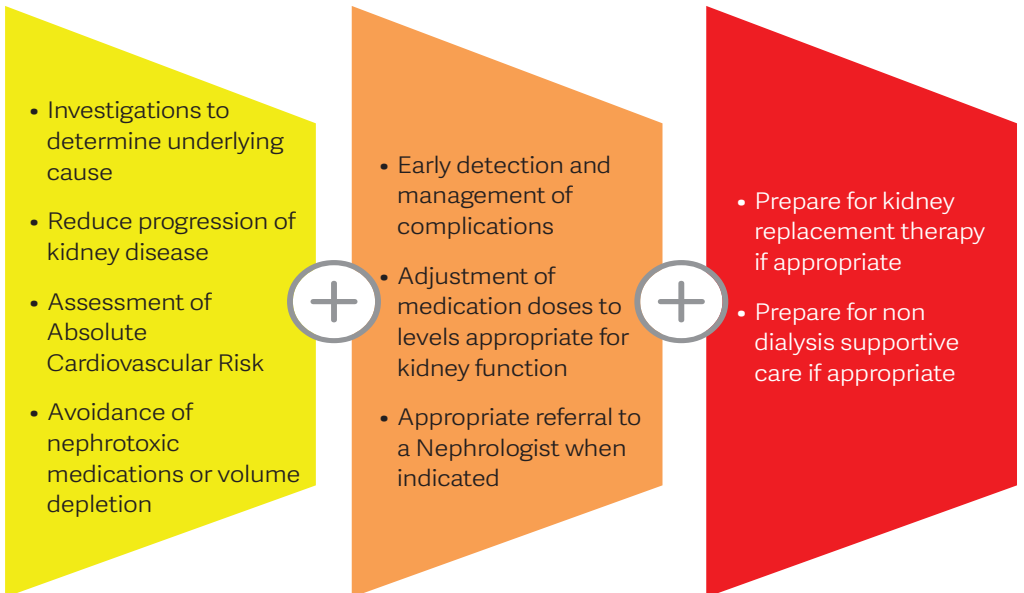
www.kidney.org.au



## Stages of CKD

| Kidney Function Stage | GFR (mL/min/1.73m <sup>2</sup> ) | Albuminuria Stage   |  |  |
|-----------------------|----------------------------------|---|--|--|
|                       |                                  | Normal (urine ACR mg/mmol) Male: < 2.5 Female: < 3.5                        | Microalbuminuria (urine ACR mg/mmol) Male: 2.5-25 Female: 3.5-35 | Macroalbuminuria (urine ACR mg/mmol) Male: > 25 Female: > 35 |
| 1                     | ≥90                              | Not CKD unless haematuria, structural or pathological abnormalities present | Yellow   | Red  |
| 2                     | 60-89                            |   |  |  |
| 3a                    | 45-59                            | Yellow  | Orange   | Red  |
| 3b                    | 30-44                            | Orange  | Orange   | Red  |
| 4                     | 15-29                            | Red   | Red  | Red  |
| 5                     | <15 or on dialysis               | Red   | Red  | Red  |

## Goals of management



The Australian Kidney Foundation

Trading as Kidney Health Australia

ABN 37 008 464 426 | Charity No. CH 0614