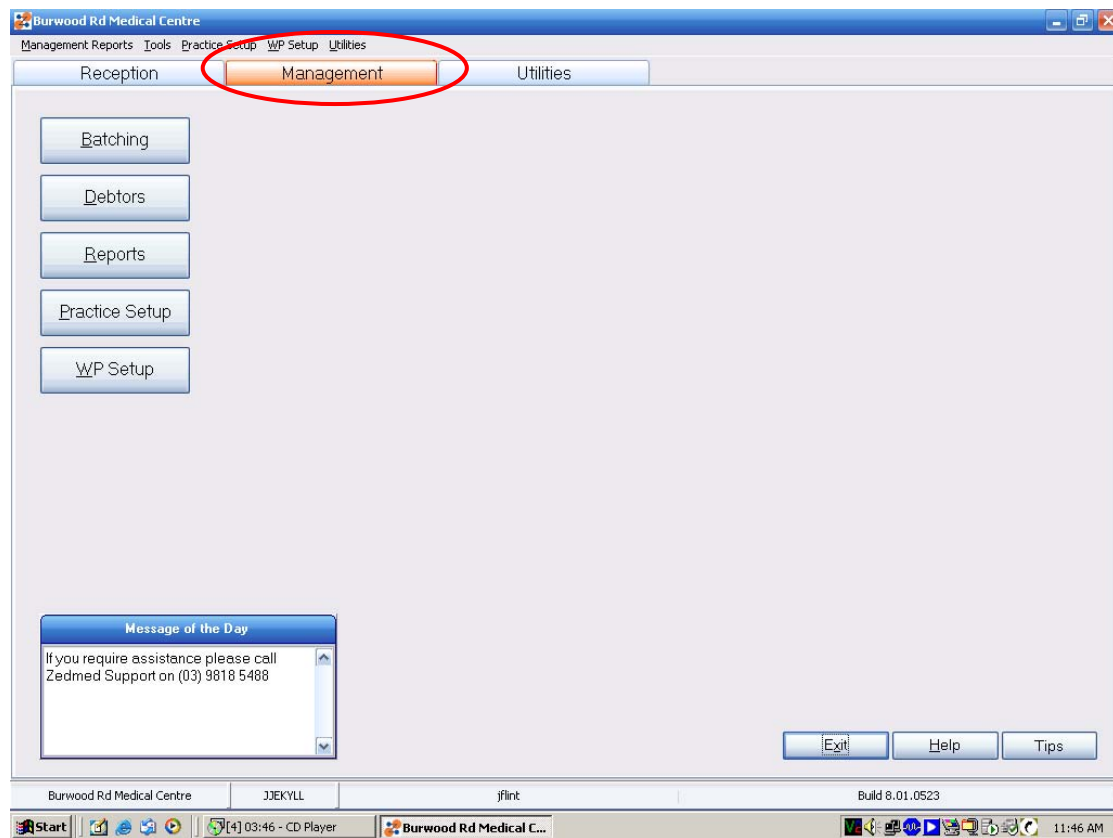


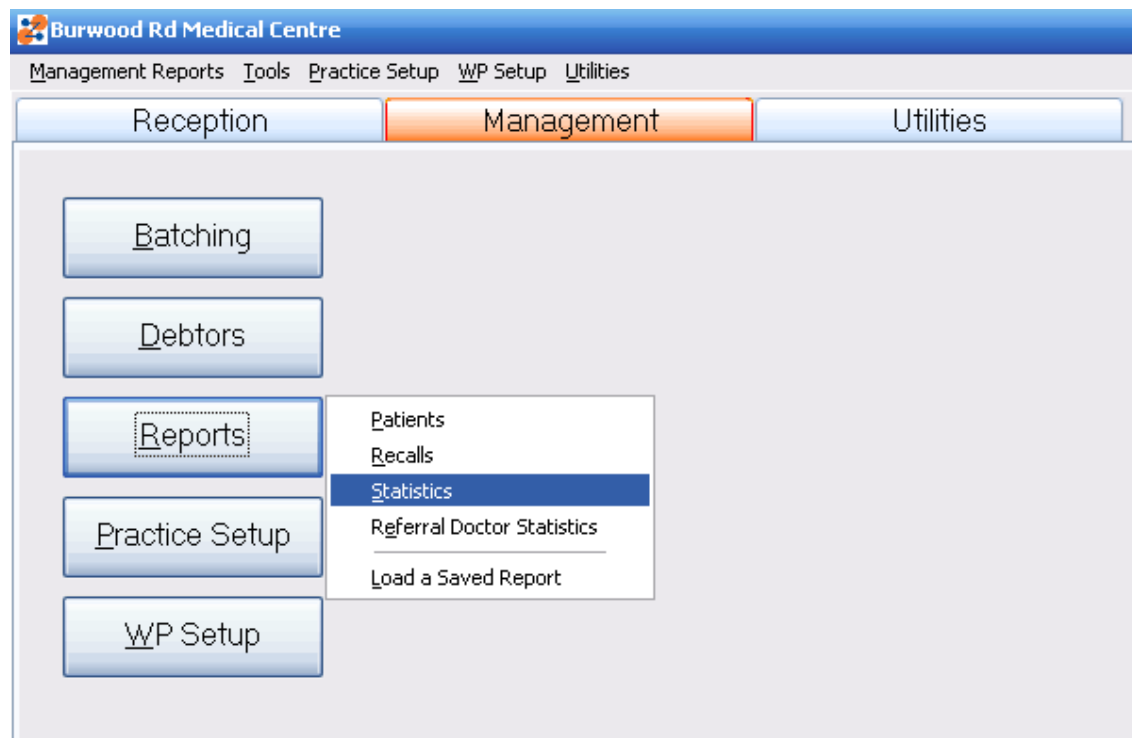
PRACTICE HEALTH ATLAS™

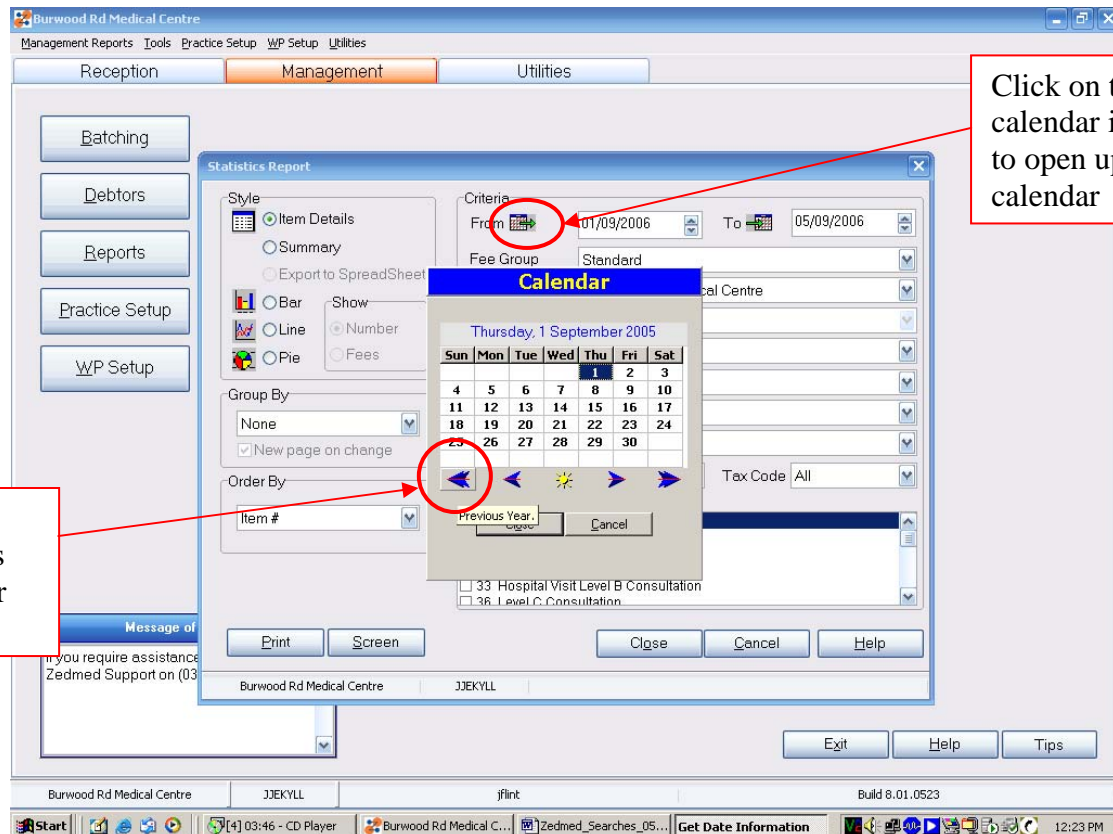
How to search for billing activity using Zedmed

Open Zedmed and click on the Management Tab



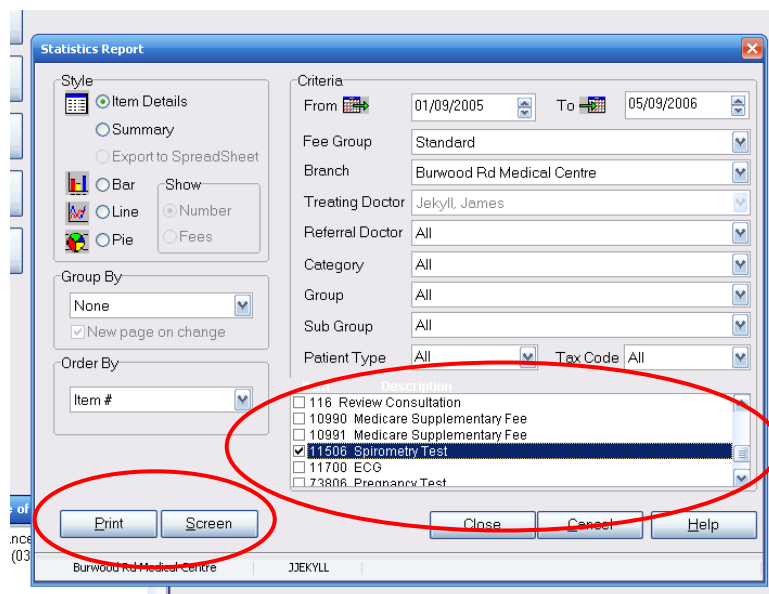
Choose Reports -> Statistics from the Menu





Set the dates to search from and to.

Now choose the items that you want to search on. You can check as many as you wish. Note that the below screenshot is from a sample database, so not all of the relevant items in the PHA appear.



Now you can click “Print” (to send the results to a printer) or “Screen” (to view the results on the screen).