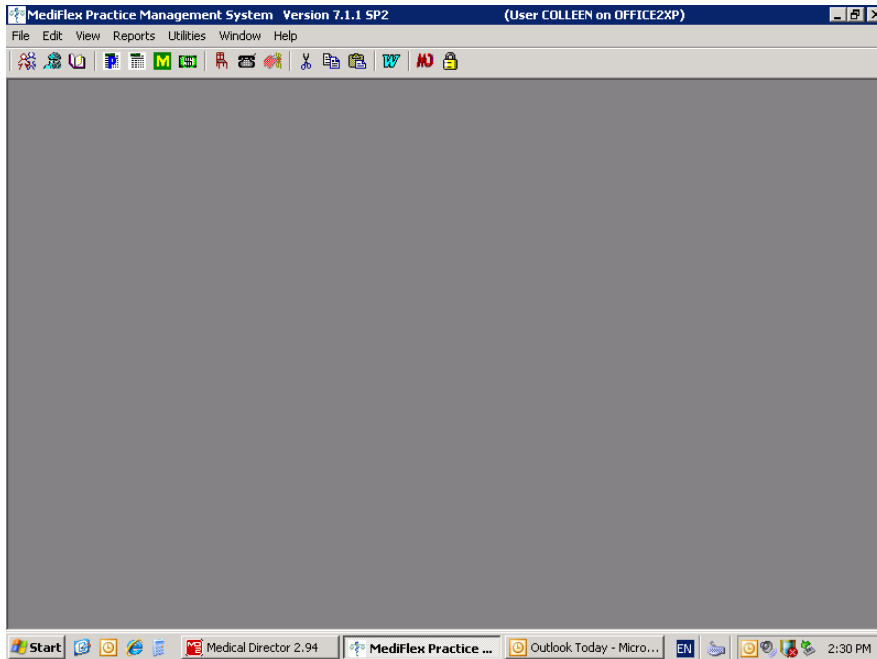
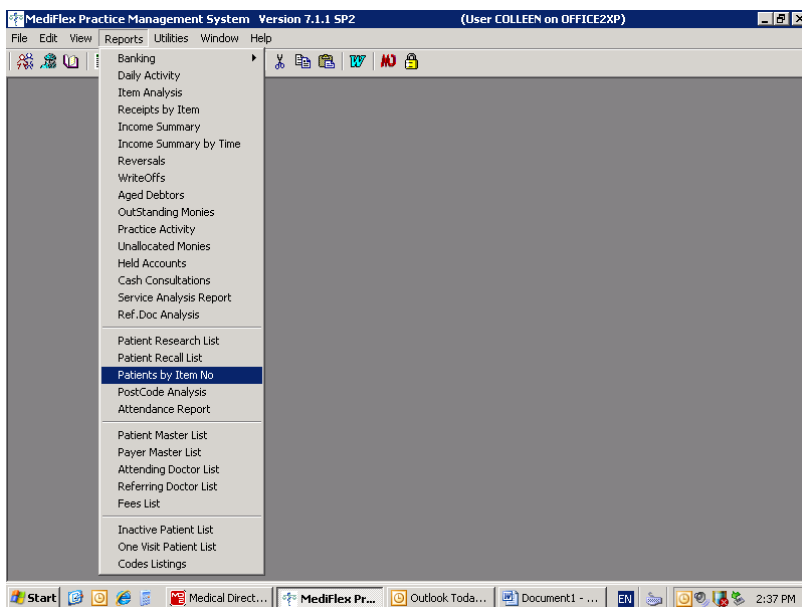


Instructions for extracting MBS Item Number data for the business modeling component of PHA for Mediflex

To start report open Mediflex on start up screen as pictured below select heading Reports



Select patients by item No



Instructions for extracting MBS Item Number data for the business modeling component of PHA for Mediflex

Then enter in required item no's maximum of 5 Item numbers can be searched for at anyone time, then enter service date period that is required.

For Report Detail select Show detail, for Sort Order select Service Date finally Output destination select Printer.

If you need more then five item numbers continue process until all are printed.

